



Ets-1 (phospho Thr38) Polyclonal Antibody

Catalog No	YP-Ab-01385
Isotype	IgG
Reactivity	Human;Mouse;Rat
Applications	WB;IHC;IF;ELISA
Gene Name	ETS1
Protein Name	Protein C-ets-1
Immunogen	The antiserum was produced against synthesized peptide derived from human ETS1 around the phosphorylation site of Thr38. AA range:11-60
Specificity	Phospho-Ets-1 (T38) Polyclonal Antibody detects endogenous levels of Ets-1 protein only when phosphorylated at T38.
Formulation	Liquid in PBS containing 50% glycerol, 0.5% BSA and 0.02% sodium azide.
Source	Polyclonal, Rabbit,IgG
Purification	The antibody was affinity-purified from rabbit antiserum by affinity-chromatography using epitope-specific immunogen.
Dilution	Western Blot: 1/500 - 1/2000. Immunohistochemistry: 1/100 - 1/300. Immunofluorescence: 1/200 - 1/1000. ELISA: 1/10000. Not yet tested in other applications.
Concentration	1 mg/ml
Purity	≥90%
Storage Stability	-20°C/1 year
Synonyms	ETS1; EWSR2; Protein C-ets-1; p54
Observed Band	54kD
Cell Pathway	Cytoplasm . Nucleus . Delocalizes from nucleus to cytoplasm when coexpressed with isoform Ets-1 p27. .
Tissue Specificity	Highly expressed within lymphoid cells. Isoforms c-ETS-1A and Ets-1 p27 are both detected in all fetal tissues tested, but vary with tissue type in adult tissues. None is detected in brain or kidney.
Function	disease:ETS is responsible for erythroblast and fibroblast transformation. The juxtaposition of the interferon and c-ETS-1 proto-oncogene may be involved in the pathogenesis of human monocytic leukemia.,function:Transcription factor.,PTM:Sumoylated on Lys-15 and Lys-227, preferentially by SUMO2; which inhibits transcriptional activity.,PTM:Ubiquitinated; which induces proteasomal degradation.,similarity:Belongs to the ETS family.,similarity:Contains 1 ETS DNA-binding domain.,similarity:Contains 1 PNT (pointed) domain.,subunit:Interacts with MAF and MAFB (By similarity). Binds to DAXX. Interacts with UBE2I.,
Background	This gene encodes a member of the ETS family of transcription factors, which are defined by the presence of a conserved ETS DNA-binding domain that recognizes the core consensus DNA sequence GGAA/T in target genes. These



proteins function either as transcriptional activators or repressors of numerous genes, and are involved in stem cell development, cell senescence and death, and tumorigenesis. Alternatively spliced transcript variants encoding different isoforms have been described for this gene.[provided by RefSeq, Jul 2011],

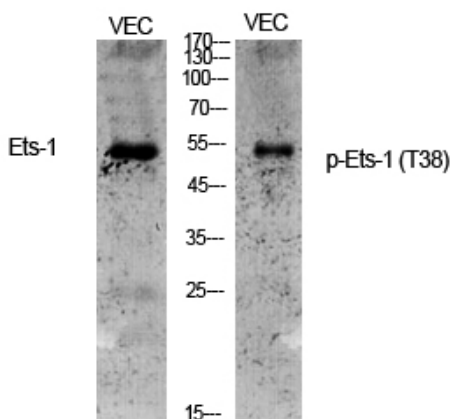
matters needing attention

Avoid repeated freezing and thawing!

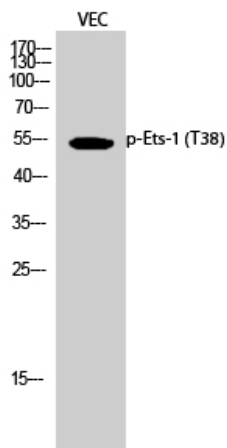
Usage suggestions

This product can be used in immunological reaction related experiments. For more information, please consult technical personnel.

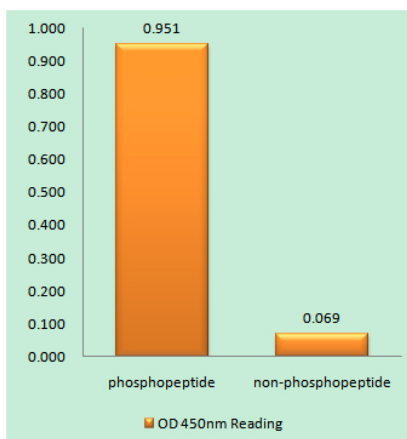
Products Images



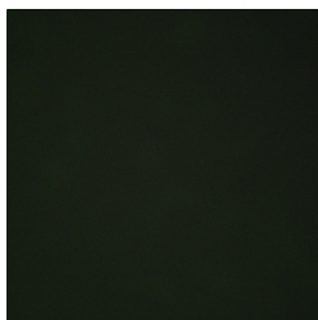
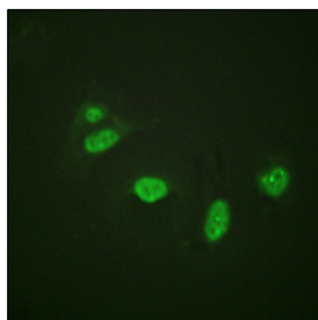
Western Blot analysis of various cells using Phospho-Ets-1 (T38) Polyclonal Antibody cells nucleus extracted by Minute TM Cytoplasmic and Nuclear Fractionation kit (SC-003, Inventbiotech, MN, USA).



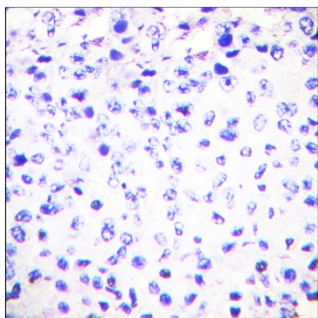
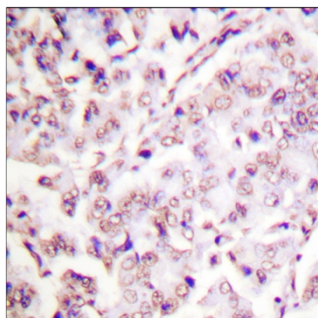
Western Blot analysis of VEC cells using Phospho-Ets-1 (T38) Polyclonal Antibody cells nucleus extracted by Minute TM Cytoplasmic and Nuclear Fractionation kit (SC-003, Inventbiotech, MN, USA).



Enzyme-Linked Immunosorbent Assay (Phospho-ELISA) for Immunogen Phosphopeptide (Phospho-left) and Non-Phosphopeptide (Phospho-right), using ETS1 (Phospho-Thr38) Antibody



Immunofluorescence analysis of HeLa cells, using ETS1 (Phospho-Thr38) Antibody. The picture on the right is blocked with the phospho peptide.



Immunohistochemistry analysis of paraffin-embedded human breast carcinoma, using ETS1 (Phospho-Thr38) Antibody. The picture on the right is blocked with the phospho peptide.